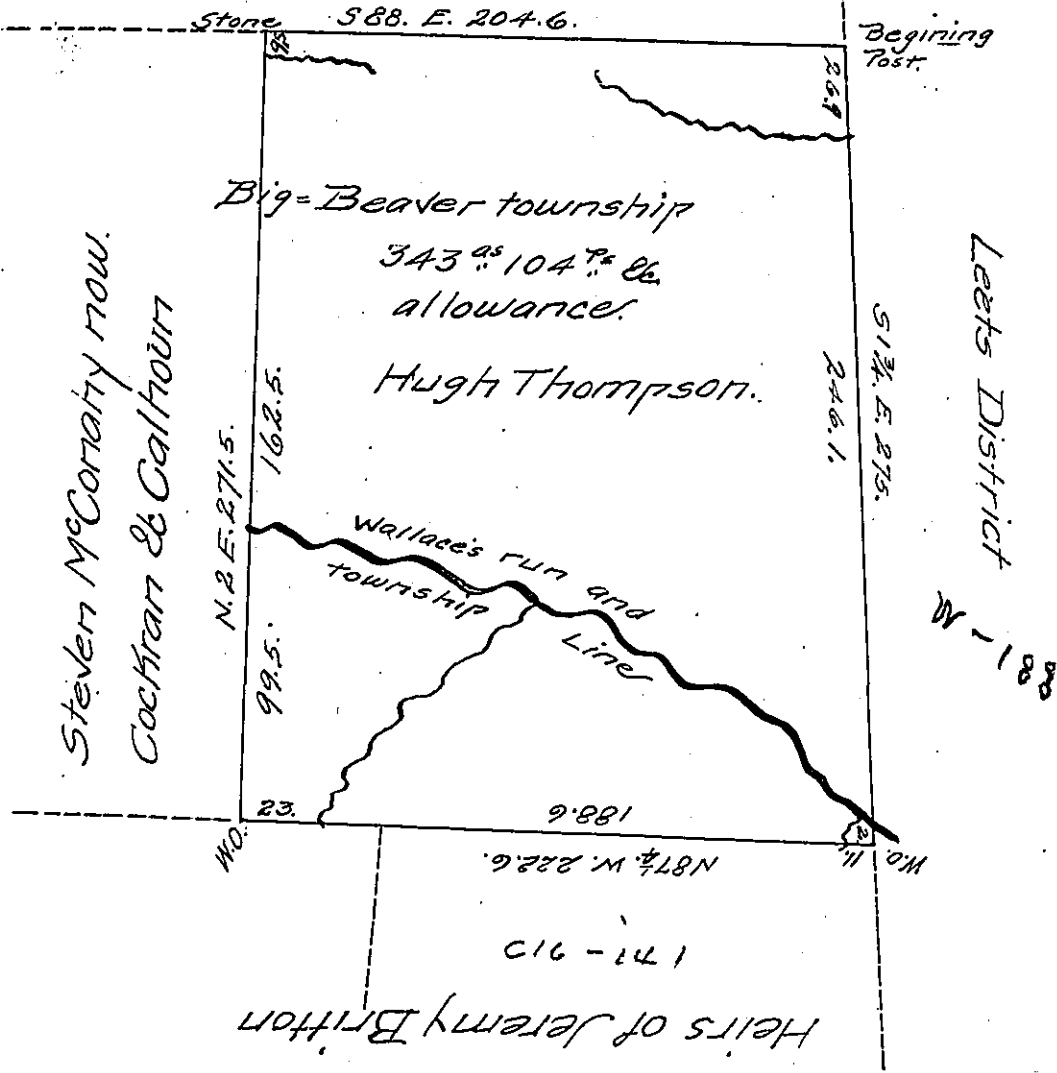


c. 20.. 213
Samuel Chapman.

✓



The above draught represents a tract of land Situate on Wallace's run partly in Chippewakey & partly in Big Beaver township Beaver County Pa. Surveyed February 10th AD. 1852 in pursuance of a Warrant Granted to Hugh Thompson for 32.5 acres ^(of land improved) dated Jan 14th AD. 1852 - containing 343 acres 104 7/8 &c allowance of 6 per Cent.

Azariah Wynn. C.S.

To the Hon. J Porter Brawley }
Surveyor General Pa. }

IN TESTIMONY that the above is a copy of the original remaining on file in the Department of Internal Affairs of Pennsylvania, made conformably to an Act of Assembly approved the 16th day of February 1833, I have hereunto set my hand and caused the Seal of said Department to be affixed at Harrisburg, this twenty first day of February 1907.

Azariah Wynn
Secretary of Internal Affairs.